

Monday 8 January 2024

New Year Updates - Valentine

Dear Parents and Carers,

I am writing to provide further updates on staffing, our school improvement journey and the work the school have been undertaking to improve the setting for all children attending.

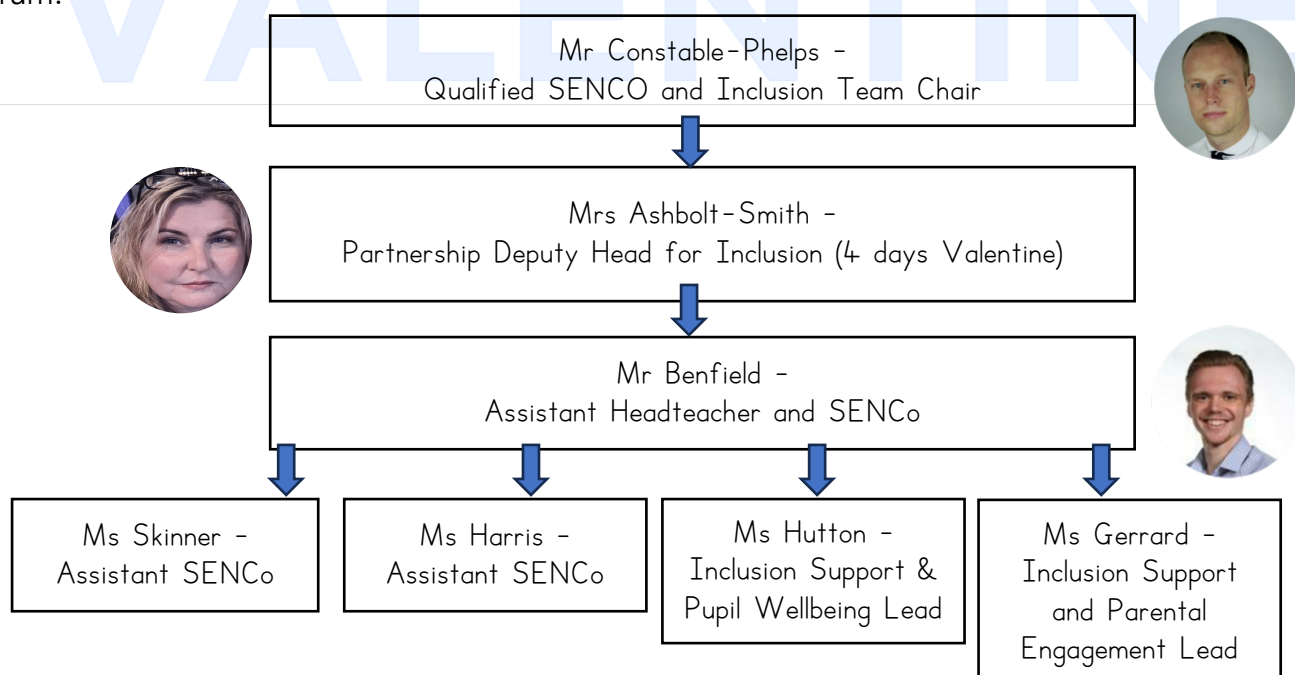
Since the parent forum, at the end of the term, robust action has been taken to ensure that the provision for children with Special Educational Needs and Disabilities (SEND) improves.

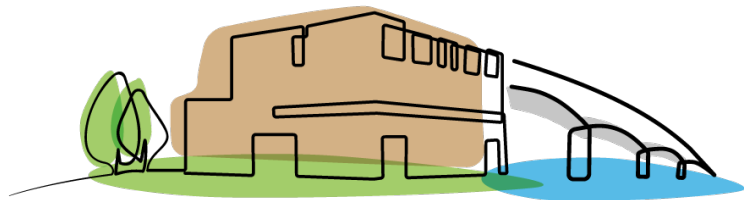
Parents told myself and governors that they had "lost faith" in the school because of a lack of support, diligence and checking-in to improve the systems and processes for those on the special needs register. Other parents were exasperated that, after seeking help and wanting to meet with SEND leaders, this hasn't happened.

I am updating you that Mr Davies left Valentine in December, and Mrs Wall will be stepping into a class teaching role at Valentine and away from SEND leadership.

Valentine Leadership of Special Educational Needs

We have increased the team by adding 3 new staff members. I am aware that many parents won't know who these staff members are – but they will be available to meet you at the next parent forum.





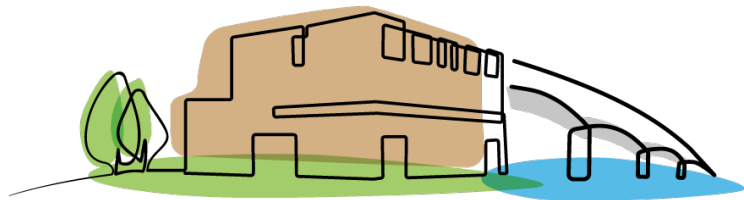
How can I communicate with the SEND team?

As we stated at the parent forum, we are not permitted (because of GDPR and Safeguarding) to enable parents to email individual staff members, instead you should send concerns/queries or requests through to info@valentineprimary.co.uk.

If you require a meeting with a team member – this is achieved through contacting the main office and arranging a convenient time. This is added to the staff members' diary.

Introductions to new SEND team members:

Mrs Ashbolt Smith	Deputy Head for Inclusion (and SENCo)	<p>Mrs Ashbolt-Smith has worked for the majority of her career as a leader at Vermont School. She is a qualified SENCo and provides training for teachers and TAs across Southampton for those with additional needs.</p> <p>Mrs Ashbolt-Smith is now our Deputy across the three schools – based at Valentine for four days per week. She oversees inclusion across the school including behaviour and attitudes.</p>
Mr Benfield	Assistant Head and SENCo	<p>Mr Benfield has worked at Mason Moor for the majority of his career. More recently he was the SENCo at the school – leading on provision for all those on the SEND register.</p> <p>Mr Benfield will be overseeing the classroom practice and mainstream inclusion methods employed to support children in their lessons. He will oversee the annual review process and liaise with the local authority on matters related to statutory assessment, provision and EHC/IEP reviews.</p>
Ms Hutton	Inclusion Support and Wellbeing Lead	<p>Ms Hutton has worked across Southampton for a number of years. Originally in mainstream, for the past number of years she has been a HLTA at Vermont School.</p> <p>At Valentine, Ms Hutton ensures that children have their provision needs met to stay in class and be successful. She meets children on-call if there are issues in class to help them re-focus in lesson.</p>
Ms Gerrard	Inclusion Support and Parental Engagement Lead	<p>Ms Gerrard also joins us from Vermont School. She has worked closely with Ms Ashbolt-Smith on outreach, providing training to schools across the city.</p> <p>At Valentine, Ms Gerrard is focused on supporting successful integration in classrooms for those who struggle. In addition she works with families, provides NVR training and support and signposts to external agencies.</p>

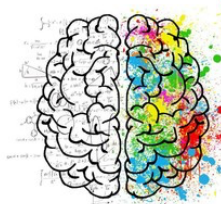


VALENTINE

PRIMARY SCHOOL

Neurodiversity Profiling Tool

We have some great news. Portsmouth City Council and NHS Solent have been trialling a tool that enables schools to work with parents to look at the strengths and difficulties of a child in terms of their Neurodiversity Profile.



NEURODIVERSITY PROFILING TOOL

Valentine Primary School, alongside St. Mary's and Mason Moor, are the only three schools in Southampton trialling the tool. Alongside the SEND team at Southampton City Council, the tool will be used to enable parents, teachers and children to better understand their child's developmental profile with strategies to help in school and at home. Staff across the three schools are receiving training over the coming month.

The purpose of the tool is to support parents in understanding the complexities and potential signs related to autism, attention deficit disorder (ADHD), dyspraxia and other neuro-developmental needs.

Parents and carers can:

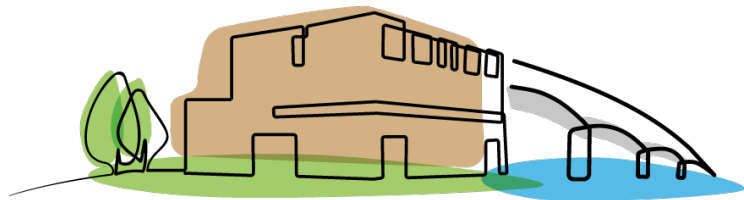
- Request for the school to complete a neuro-diversity profile (once staff are trained) which will be co-produced with you.
- The outcome of the development strands will then focus on the work inside (and outside) the school to support your child.
- Use the completed profile for further exploration with external agencies. For example – to be used to progress a CAMHS referral.

Redecoration and School Improvement



Parents and Carers asked about the internal decoration of the school – many disappointed by how it looked having seen it for the first time at recent Parents Evenings.

I, and governors, explained that the redecoration of the school is taking place and has currently been completed in Years R and 1 as well as in the Main School Hall. As you can see, it looks fantastic, it has uplifted the school and children are very proud.



VALENTINE

PRIMARY SCHOOL

Parent Forum

Our next parent forum, with leaders and governors, is due to take place on **Monday 29 January at 5pm**. This is in response to a number of parents who requested a later time – due to work commitments. At the forum, we will be taking a tour of the building so that you can see the improvements. As well as discussing what we have been up to over the term. This is an opportunity for you to bring forward any issues that arise and you would like to discuss.

Yours sincerely,

DJ Constable-Phelps .

Daniel Constable-Phelps
Executive Headteacher

