

Monday 29th April 2024

Subject: Year 6 SATs

Dear Parents and Carers,

What are the end of Key Stage 2 tests?

Children in Year 6 will be taking the Key Stage 2 tests in May 2024. They provide information about how your child is progressing and how they compare to children of the same age nationally. They provide a 'snapshot' of your child's learning, progress and attainment at the end of KS2. These tests are both set and marked externally.

The tests are not qualifications and don't affect your child's future options in school. However, they do help to develop key skills which provide an important foundation for secondary school.

When do the end of Key Stage 2 tests take place?

Date	Paper	Duration
Monday 13 th May 2024	English Grammar, Punctuation and Spelling (GPS) Papers 1 and 2	45 minutes (GPS) Approx. 15 minutes (Spelling)
Tuesday 14 th May 2024	English reading	1 hour
Wednesday 15 th May 2024	Mathematics Paper 1 (Arithmetic) and Paper 2 (Reasoning)	30 minutes (Paper 1) 40 minutes (Paper 2)
Thursday 16 th May 2024	Mathematics Paper 3: Reasoning	40 minutes

What is involved in the tests?

The Reading Test

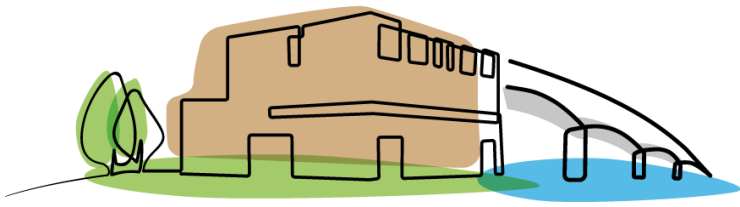
- Three passages of text which get progressively more difficult
- A total of 50 marks
- A variety of question types

The Arithmetic Test

- 35 questions
- No context to the questions, so there is no reading needed
- Some can be solved mentally, others require jottings or written methods
- Long multiplication and long division are worth 2 marks (all other questions are worth 1 mark)

The Grammar, Punctuation and Spelling (GPS) Test

- Paper 1 assesses grammar and punctuation (50 marks)
- Paper 2 assesses spelling (20 words)
- A variety of question types



VALENTINE

PRIMARY SCHOOL

The Reasoning Tests

- 35 marks per paper
- They assess mathematical problem solving and reasoning
- Calculators not allowed
- A significant amount of reading needed

There is no **writing test** – this is assessed by your child's teacher.

Breakfast

In order to ensure that children are settled in school and are ready to complete their tests we will be inviting them into school earlier than usual. We will provide bagels, cereals and a range of other breakfast items from 8.30am.

Attendance

It is more important than ever that your child arrives in school on time for this week as tests will start promptly at the start of the school day.

If you have any questions or would like to know how to support your child further at home, please do come and speak to myself or your child's class teacher.

Yours sincerely,
Mrs H Hughes
Acting Assistant Headteacher

A large, faint, light blue illustration of the school building and the word "VALENTINE" in a bold, sans-serif font, serving as a background for the signature area.