

Parent / Carer Reminders

Dear Parents & Carers

Please find detailed below some reminders for your information.

PE Timetable

YEAR GROUP	MONDAY	TUESDAY	WEDNESDAY	THURSDAY	FRIDAY
Year R			✓		✓
Year 1	✓		✓		
Year 2		✓			✓
Year 3	✓		✓		
Year 4		✓	✓		
Year 5		✓	✓		
Year 6		✓			✓

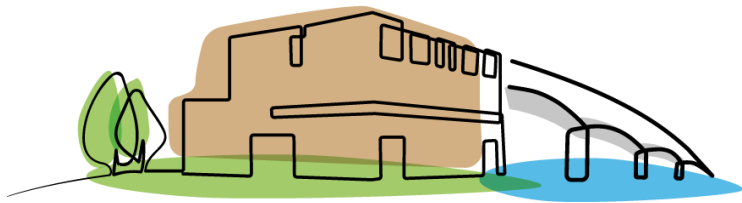
PE Kit

- White or royal blue T-shirt
- Black or blue shorts, tracksuit bottoms or leggings
- Plimsolls or plain trainers
- No make-up (including nail varnish, false nails or false eyelashes) should be worn in school.
- Only stud earrings should be worn (these must be taken out or taped up for PE)

The school uniform at Valentine is:

- A white or pale blue shirt/ polo shirt/ blouse
- Year R - 5 - Royal blue jumper, cardigan or sweatshirt (preferably with school logo)
- Year 6 - Purple jumper, cardigan or sweatshirt (preferably with school logo)
- Black or grey knee-length skirt /pinafore dress/ trousers / tailored knee-length shorts (no leggings)
- Summer uniform - blue/ white checked or striped
- Plain black, grey or white tights or socks
- Shoes - plain, black low-heeled shoes, ankle boots or black trainers

If your child comes into school without the correct uniform on as stated above, a phone call home will be made and we will ask for the correct uniform to be brought into school.



VALENTINE

PRIMARY SCHOOL

Food in School

We are also noticing that the snacks and lunch boxes some children are bringing into school are becoming increasingly unhealthy. Please open this link for some ideas for healthy lunch boxes [Healthy lunch box and snack ideas](#). Please do not send your child into school with chocolate bars and sweets. **Energy/sports drinks are NOT PERMITTED in school.** Also please do not send your children into school with Energy Drink Bottles which are being reused for water or juice.

NUT FREE SCHOOL I would like to remind you that we are a nut free school. We have several children and adults in school who have a severe nut allergy. Coming into contact with nuts or nut products i.e. peanut butter, whether through touch, ingestion or through airborne particles could be life threatening for these persons. If your child has had any nut product before coming to school, please ensure they wash their hands after eating to alleviate any nut contamination through touch.

Bikes and Scooters

For the safety and welfare of children who find it inviting to use bikes and scooters which are not securely locked we have made it compulsory that if your child brings a bike or scooter to school and leaves it on the school premises they MUST BE locked securely. Unfortunately, if your child does not have a lock the bike or scooter will not be permitted to stay on site during the school day. **Bikes and Scooters are not to be used on the school site,** please ensure you and your child walk with their bike or scooter while on the school site.

Electric Scooters

I would also like to remind you that NO ELECTRIC SCOOTERS are permitted on the school site for the safety and wellbeing of all persons. If any adults ride an electric scooter to the school these MUST be left outside and securely locked while you see your children on to the school site.

Parking

It has been brought to our attention that there are a number of parents / carers parking their vehicles over local resident's driveways and allowing their children onto their property. Could I please ask you to park considerately and legally when dropping off and collecting children from the school site and please do not allow your children to access the local residents front gardens.

Vaping and Smoking

Vaping and Smoking is not permitted anywhere on the school site.

Dogs/Pets

Dogs or any other pets are not permitted anywhere on the school site.

I would like to thank you for supporting the school with these reminders which will ensure the health, safety and well being of everyone.

Yours sincerely

A handwritten signature in black ink that reads "ARutter".

Anna Rutter
Acting Headteacher

Valentine Ave, Sholing, Southampton, SO19 0EQ
info@valentineprimary.co.uk | 023 8044 8944

Executive Headteacher: Mr D Constable-Phelps
Acting Headteacher: Mrs A Rutter