

Friday 26 April 2024

Reach Trust Consultation - Information

Dear Parents and Carers,

Further to my letter to you earlier in the week, I am attaching information to you about the Co-operative Trust Consultation, so that parents and carers have a deeper understanding about it.

In addition, I had correspondence with a parent who asked that I also provide information about the difference between a Co-operative Trust and a Multi-Academy Trust. Therefore, I am doing so with information collated from various sources including NGA (national governance association) and the Department for Education.

I am also providing dates for parents and carers to come in, and to speak to leaders about the Co-operative Trust proposals. There are now three dates, at different times, to provide more favourable opportunities for working parents and those with childcare commitments. If you need another date – email in and we will accommodate a discussion.

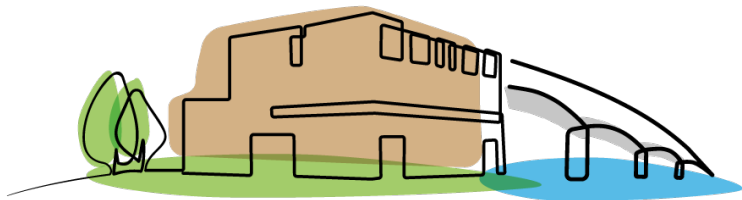
Parent Meeting 1: Friday 3 May 5:30 – 6:30

Parent Meeting 2: Monday 20 May 12:00 – 13:00

Parent Meeting 3: Thursday 23 May 08:30 – 09:30

Yours sincerely,

Mr D Constable-Phelps
Executive Headteacher



Co-operative Trust Model (Co-op Model) Source: Co-operative Movement Model	Multi-Academy Trust (MAT) Source: NGA
<p>What is a co-operative trust?</p> <ul style="list-style-type: none"> • Made possible by 2006 Education & Inspections Act • Maintained Primary, Secondary or Special schools • Foundation school with a Trust – charitable company limited by guarantee • Very different from an academy • Does not take school out of local authority • Provides model for collaboration with other schools, FE/HE, businesses, charities etc • Not privatisation but mutualisation <p>How does a Co-operative Trust support a school?</p> <ul style="list-style-type: none"> • They encourage innovation – through external partners • Promotes every child matters and addresses transition and continuity • Promotes community cohesion and involvement • Governing Body continues to run the school via a delegated budget • Governing Body becomes admissions authority and legal employer <p>The process of joining a co-operative</p> <ul style="list-style-type: none"> • become a Foundation School and/or join a trust • Consult – then consider responses • Publish a statutory notice • Land transfer to the Co-operative Trust ▪ Consider responses and determine the proposals 	<p>What is a MAT?</p> <p>A Multi-Academy Trust is a legal entity that governs a group of schools through a single set of directors.</p> <p>Why are schools joining MATs?</p> <p>Both Conservative and Labour Parties (in the past) have indicated that their preferred educational structure is academies that are part of MATs. Schools can use the strong collaboration and accountability afforded by the MAT to drive up standards and share best practice and services across the trust, replacing aspects of former local authority support.</p> <p>Do we need to get permission to convert to a MAT?</p> <p>Not in our circumstance. The DFE issue academy orders to schools they perceive to have declined over a period of time. This means that the DFE choose a MAT sponsor to take the school from Local Authority ownership.</p> <p>How is funding organised within the MAT?</p> <p>Funding for schools within a MAT is allocated directly from government, instead of through the local authority. It is governed through a master funding agreement between the Secretary of State and the MAT.</p> <p>What happens to the land?</p> <p>The land is transferred to the MAT, who then decide on the best use of this resource.</p> <p>Will governance change?</p> <p>Yes. It will include a change in the school’s governance structure. The current structure will be replaced by a Trust Board. These will provide strategic direction for the MAT and this will drip-feed into each school.</p> <p>Will admissions change?</p> <p>MATs usually follow the local authority protocol but could decide on their own admissions procedures for the school.</p>