

# VALENTINE

## PRIMARY SCHOOL

Thursday 5<sup>th</sup> September 2024

### Welcome to Year R


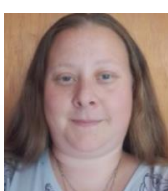
---

Dear Parents / Carers,

Welcome to Year R!



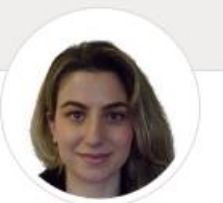

### Meet the team

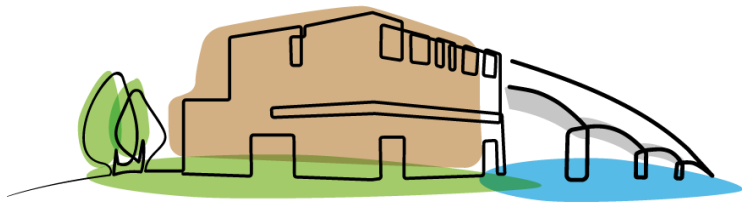
#### Teachers

<p><b><u>R Red</u></b> Mrs Padgham EYFS Lead Class Teacher</p> 	<p><b><u>R Green</u></b> Mrs Cranham Class Teacher</p> 
--	--

#### Support Staff:

Our support staff will be based in their home classes for most of the school day. However, they each have a valuable skill set and will work across the year group for a range of interventions and support.

<b><u>R Red</u></b>	<b><u>R Green</u></b>
<p>Miss Doughty</p> 	<p>Miss Lovett</p> 
<p>Mrs Shenaj</p> 	<p>Mr Marsh</p> 



# VALENTINE

## PRIMARY SCHOOL

### **PE days: Tuesday and Wednesday**

Children to wear black or grey shorts, jogging bottoms or leggings depending on the weather. Children to wear a white or blue plain or school t-shirt. Children need to wear a school jumper when weather appropriate. Children to wear black trainers or plimsolls. Please ensure all items are clearly named.

### **Reading at home**

Once the first sets of sounds have been taught in our phonics lessons, the children will begin to bring home books including these sounds. This is to ensure the children become confident readers without any unknown sounds trying to trick them! This will happen just at the start of October. Children will also bring home a home reading record. This will be checked each day and any home reading will be celebrated with additional green track it points!

We will also be asking the children for reward ideas to create a greater incentive for frequent home readers – we will keep you updated!

### **Homework**

Each week, the children will come home with a spelling sheet. This will be from 'Letter Join'. This will have words with the taught sounds in for children to rehearse spelling and a sentence on the back page. Once the first sets of sounds have been taught in phonics, this will be sent home with your child. Make sure you check their bags!

Additional challenges will be sent through Tapestry. Please ensure app notifications are enabled on your device for Tapestry to see important memos flagged to you.

Yours sincerely,

Mrs Padgham

EYFS Lead