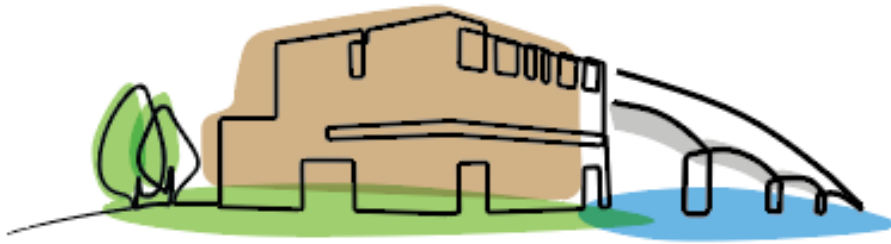


Valentine Primary School



VALENTINE PRIMARY SCHOOL

Equality Statement

Equality Policy

Approved by:	Governing Body	Approval date:	Jan 2027
Last review date:	Jan 2025	Contact:	info@valentineprimary.co.uk
Next review date:	Jan 2027	Approvers signature:	Chair of Governing Body

Equality Statement

At Valentine Primary School, we are committed to ensuring equality of opportunity for all pupils, staff, parents and carers irrespective of race, gender, disability, belief, sexual orientation, age or socio-economic background. We aim to develop a culture of inclusion and diversity in which all those connected to the school feel proud of their identity and ability to participate fully in school life.

We tackle discrimination through the positive promotion of equality, by challenging bullying and stereotypes and by creating an environment which champions respect for all.

We believe that diversity is a strength which should be respected and celebrated by all those who learn, teach and visit us.

Equality in Teaching and learning

We provide all our pupils with the opportunity to succeed and to reach the highest level of personal achievement. We do this by:

- Ensuring equality of access for all pupils and preparing them for life in a diverse society
- Using materials that reflect the diversity of the school, population and local community without stereotyping
- Promoting attitudes and values that challenge any discriminatory behaviour or prejudice
- Providing opportunities for pupils to appreciate their own culture and celebrate the diversity of other cultures
- Seeking to involve all parents in supporting their child's education
- Utilising teaching approaches appropriate for the whole school population which are inclusive and reflective of our pupils.

Equality in Admissions and Exclusions

Our admissions arrangements are fair and transparent and do not discriminate on the grounds of race, gender, religion, belief, disability and/or socio-economic background.

Equal Opportunities for Staff

All staff appointments and promotions are made on the basis of merit and ability and in compliance with the law. We are keen to ensure that the

staffing of the school reflects the diversity of our community.

Valentine Primary school has a full and separate Equality Policy. Please consult this for further details if you wish.

Below is a list of legislation that was considered when preparing our policy:
The Equality Act (2006 and 2010) amended the requirements of the Equal Pay Act (1970) (and the Sex Discrimination Act)
The Disability Discrimination Act (2005) • The Race Relations Act (1976)
The Race Relations Amendment Act (2000)
The Human Rights Act (2000)
The Children's Act (2004) The Employment Equality (Sexual Orientation) Regulations 2003
Employment Equality (Religion and Belief) Regulations 2003.