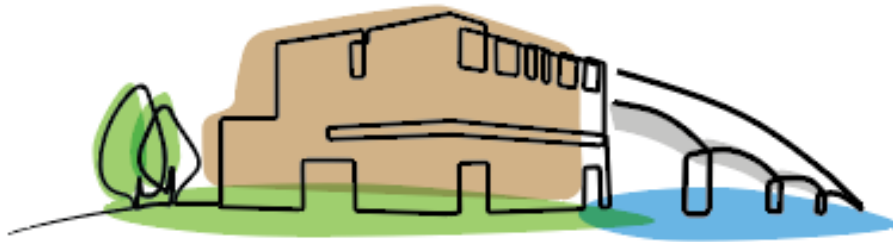


Valentine Primary School



VALENTINE PRIMARY SCHOOL

PSHE & Relationships, Sex Education Policy

PSHE & Relationships, Sex Education Policy 2023-2024

Approved by: Governing Body

Approval date: September 2024

Last review date:

Contact:

Next review date: Autumn 2025

Approvers signature: Chair of Governors

Valentine Primary School's mission statement:

Valentine Primary School is devoted to nurturing each child's ability to articulate ideas and understanding, through oracy, instilling a lifelong skill for success. Our curriculum extends beyond the academic, fostering the talents of the whole child. We have created an environment that enables focused learning, free from distraction. With a commitment to communication, holistic growth, and intellectual stimulation, we empower pupils to express themselves confidently, embrace diverse challenges, and thrive as well-rounded individuals. Our mission is to prepare them for a dynamic world by providing a platform for their character, emotional, and social development.

Our 'I DREAM' values:

I		Independent Being independent learners empowers us to explore, discover, and solve problems, fostering lifelong skills for personal growth.
D		Determined Being determined learners fuels our resilience, pushing us to overcome obstacles and achieve goals with unwavering dedication and success.
R		Reflective Being reflective learners allows us to learn from experiences, to make better choices and continuously improve.
E		Enquiring Being enquiring learners' sparks curiosity, driving us to ask questions, seek knowledge, and develop critical thinking skills.
A		Ambitious Cultivating ambition in class ignites a desire for mastery, pushing us to pursue excellence, take risks, and to be the best we possibly can be.
M		Motivated Being motivated is essential for success, it fuels perseverance, focus, and the drive to overcome setbacks on the path to achievement.

Every child deserves a champion. An adult who will never give up on them, who understands the power of connection and who insists that they become the best they can possibly be.

Personal, social, health and economic education (PSHE) are an important and necessary part of all pupils' education. Through a planned programme of learning, we aim to provide our pupils with the knowledge, understanding and skills that they need in order to manage their lives both now and in the future. As part of a whole school approach, we aim to develop the attributes our pupils need to thrive as individuals, as part of a family and as a confident member of the wider community.

Our school is committed to serving its community and surrounding areas. We recognise the multicultural, multi faith and ever-changing nature of the United Kingdom, and therefore those we serve. We also understand the vital role we have in ensuring that groups or individuals within the school are not subjected to intimidation or radicalization by those wishing to unduly, or illegally, influence them. At our school we embrace the British Values of: Democracy, The rule of law, Individual liberty, Mutual respect and Tolerance of those of different faiths and beliefs.

We want our children to learn to understand and respect our common humanity, diversity and differences so that they can go on to form the effective, fulfilling relationships that are an essential part of life and learning.

Pupil Learning Outcomes

We want our children to develop self-awareness, positive self-esteem and confidence, enabling them to:

- Have a sense of purpose
- Value self and others
- Form healthy and positive relationships
- Make and act on informed decisions
- Communicate effectively
- Work with others
- Respond to challenge
- Be an active partner in their own learning
- Be active citizens within the local community
- Explore issues related to living in a democratic society
- Become healthy and fulfilled individuals

Curriculum Content PSHE (which includes Relationships and Sex Education) is taught weekly through a planned programme of work that follows the Jigsaw PSHE programme. Jigsaw brings together PSHE Education, emotional literacy, social skills and spiritual development in a

comprehensive scheme of learning. Teaching strategies are varied and are mindful of preferred learning styles and the need for differentiation. Jigsaw is designed as a whole school approach, with all year groups working on the same theme (Puzzle) at the same time. This enables each Puzzle to start with an introductory collective worship, generating a whole school focus for adults and children alike.

There are six Puzzles in Jigsaw that are designed to progress in sequence from September to July. Each Puzzle has six Pieces (lessons) which work towards an 'end product', for example, The School Learning Charter or The Garden of Dreams and Goals.

Each Piece has two Learning Intentions: one is based on specific PSHE learning (covering the non-statutory national framework for PSHE Education but enhanced to address children's needs today); and one is based on emotional literacy and social skills (covering the SEAL learning intentions but also enhanced). The enhancements mean that Jigsaw is relevant to children living in today's world as it helps them understand and be equipped to cope with issues like body image, cyber and homophobic bullying, and internet safety. Every Piece (lesson) contributes to at least one of these aspects of children's development. This is mapped on each Piece and balanced across each year group.

For children in Reception, the lesson plans clearly identify the Early Learning Goal (ELG) and the Development Matters levels (D4 - D6) that will be that session's focus. Every plan has child initiated and adult-led activity ideas for both the indoor and outdoor learning environment.

Jigsaw PSHE & RSE Curriculum Content

Jigsaw covers all areas of PSHE for the primary phase, as the table below shows:

Term	Puzzle name	Content
Autumn 1:	Being Me in My World	Includes understanding my place in the class, school and global community as well as devising Learning Charters)
Autumn 2:	Celebrating Difference	Includes anti-bullying (cyber and homophobic bullying included) and diversity work
Spring 1:	Dreams and Goals	Includes goal-setting, aspirations, working together to design and organise fund-raising events
Spring 2:	Healthy Me	Includes drugs and alcohol education, self-esteem and confidence as well as healthy lifestyle choices
Summer 1:	Relationships	Includes understanding friendship, family and other relationships, conflict resolution and communication skills
Summer 2:	Changing Me	Includes Relationships and Sex Education in the context of looking at change

Opportunities for linking aspects of PSHE will also be identified and developed by class teachers through Theme teaching. We also aim to cover aspects of PSHE through special theme days and weeks e.g. Healthy Living week.

Pedagogy and Teaching Methods

A range of teaching strategies will be used to ensure that learning is purposeful, active and exciting. Jigsaw is written as a universal core curriculum provision for all children. Inclusivity is part of its philosophy. All pupils will work within a safe, secure climate to be able to explore their own and others' attitudes, values and skills. Lessons will involve a high level of interaction where each pupil has planned opportunities for learning which will give them scope to work to their full potential.

Establishing a safe, open and positive learning environment based on trusting relationships between all members of the class, adults and children alike, is vital to successful and effective teaching and learning within this subject. Each class will establish ground rules based on the following:

- We take turns to speak
- We use kind and positive words
- We listen to each other
- We have the right to pass
- We only use names when giving compliments or when being positive

Weekly Jigsaw learning happens in Reception once the children have settled in and links are made with other learning opportunities for personal, social and emotional development. In KS1 and KS2. PSHE lessons are part of the weekly time-table. Learning opportunities in other subjects through our theme led curriculum are being developed and specific events and activities are to be planned into the school year to enrich learning. Teachers will choose the method most appropriate for their whole class to meet the objectives of the lesson. All classes use circle time to promote and discuss issues within PSHE and citizenship.

Where possible as a school we try to develop our PSHE ethos to many aspects of school life. "Respect for each other" is one of our school rules. We aim to put this into practise by valuing the opinions and ideas of our pupils. We try to involve our pupils in new initiatives that have strong PSHE links. There are fitness monitors at lunchtime. We have peer mentoring systems that involve lunchtimes and playtimes and also extend into the curriculum itself, with the development of reading mentoring. Where appropriate some classes use worry boxes to encourage children to voice their concerns. All classes nominate their own "Go to adults" if they need help outside the classroom environment. Our school council is also very much involved in collecting opinions and feeding back ideas on how we can improve our school and aspects of school life.

Parents are invited to join in events in school. Parents are regularly informed of events and developments on the website and school newsletter. Working with parents is a vital part of the whole school approach to PSHE. Aspects of it are included in our home-school agreement.

Relationships and Sex Education (RSE) is taught in the summer term through the Jigsaw programme.

We recognise that Relationships and Sex Education is a highly sensitive subject but we firmly believe that effective RSE can make a significant contribution to the development of the personal skills needed by pupils if they are to establish and maintain relationships. It also enables children and young people to make responsible and informed decisions about their health and well-being.

Whilst pupils are given the opportunity to explore their own attitudes, values and beliefs and to develop an individual moral code that will guide their actions, this is exercised within an understanding of the right of people to hold their own views within a framework of respect for others. We are educating our children to live in the real world with all its contradictions. We mustn't let our adult knowledge and bias prevent us seeing things from a child's perspective. Our focus is on building healthy attitudes and positive relationships in an environment where difference is celebrated and everyone is included and valued for who they are.

Jigsaw RSE Content

The grid below shows specific RSE learning intentions for each year group in the 'Changing Me' Puzzle.

Year Group	Piece Number and Name	Learning Intentions 'Pupils will be able to...'
1	Piece 4 Boys' and Girls' Bodies	identify the parts of the body that make boys different to girls and use the correct names for these: penis, testicles, vagina respect my body and understand which parts are private
2	Piece 4 Boys' and Girls' Bodies	recognise the physical differences between boys and girls, use the correct names for parts of the body (penis, testicles, vagina) and appreciate that some parts of my body are private tell you what I like/don't like about being a boy/girl
3	Piece 1 How Babies Grow	understand that in animals and humans lots of changes happen between conception and growing up, and that usually it is the female who has the baby express how I feel when I see babies or baby animals

	Piece 2 Babies	understand how babies grow and develop in the mother's uterus and understand what a baby needs to live and grow express how I might feel if I had a new baby in my family
	Piece 3 Outside Body Changes	understand that boys' and girls' bodies need to change so that when they grow up their bodies can make babies identify how boys' and girls' bodies change on the outside during this growing up process recognise how I feel about these changes happening to me and know how to cope with those feelings
	Piece 4 Inside Body Changes	identify how boys' and girls' bodies change on the inside during the growing up process and why these changes are necessary so that their bodies can make babies when they grow up recognise how I feel about these changes happening to me and how to cope with these feelings
4	Piece 2 Having A Baby	correctly label the internal and external parts of male and female bodies that are necessary for making a baby understand that having a baby is a personal choice and express how I feel about having children when I am an adult
	Piece 3 Girls and Puberty	describe how a girl's body changes in order for her to be able to have babies when she is an adult, and that menstruation (having periods) is a natural part of this know that I have strategies to help me cope with the physical and emotional changes I will experience during puberty
5	Piece 2 Puberty for Girls	explain how a girl's body changes during puberty and understand the importance of looking after myself physically and emotionally understand that puberty is a natural process that happens to everybody and that it will be OK for me
	Piece 3 Puberty for Boys and Girls	describe how boys' and girls' bodies change during puberty express how I feel about the changes that will happen to me during puberty
	Piece 4 Conception	understand that sexual intercourse can lead to conception and that is how babies are usually made understand that sometimes people need IVF to help them have a baby appreciate how amazing it is that human bodies can reproduce in these ways
6	Piece 2 Puberty	explain how girls' and boys' bodies change during puberty and understand the importance of looking after myself physically and emotionally express how I feel about the changes that will happen to me during puberty

	Piece 3 Girl Talk/Boy Talk	ask the questions I need answered about changes during puberty reflect on how I feel about asking the questions and about the answers I receive
	Piece 4 Babies – Conception to Birth	describe how a baby develops from conception through the nine months of pregnancy, and how it is born recognise how I feel when I reflect on the development and birth of a baby
	Piece 5 Attraction	understand how being physically attracted to someone changes the nature of the relationship express how I feel about the growing independence of becoming a teenager and am confident that I can cope with this

Withdrawal from RSE Lessons

Parents/carers have the right to withdraw their children from all or part of the Relationships and Sex Education provided at school except for those parts included in statutory National Curriculum Science. Those parents/carers wishing to exercise this right are invited in to see the head teacher and/or PSHE lead who will explore any concerns and discuss any impact that withdrawal may have on the child. Once a child has been withdrawn they cannot take part in the RSE programme until the request for withdrawal has been removed. Materials are available to parents/carers who wish to supplement the school RSE programme or who wish to deliver RSE to their children at home.

Teaching Sensitive and Controversial Issues

Sensitive and controversial issues are certain to arise in learning from real-life experience. Teachers will be prepared to handle personal issues arising from the work, to deal sensitively with, and to follow up appropriately, disclosures made in a group or individual setting. Issues that we address that are likely to be sensitive and controversial because they have a political, social or personal impact or deal with values and beliefs include: family lifestyles and values, physical and medical issues, financial issues, bullying and bereavement. Teachers will take all reasonable, practical steps to ensure that, where political or controversial issues are brought to pupils' attention, they are offered a balanced presentation of opposing views. Teachers will adopt strategies that seek to avoid bias on their part and will teach pupils how to recognise bias and evaluate evidence. Teachers will seek to establish a classroom climate in which all pupils are free from any fear of expressing reasonable points of view that contradict those held either by their class teachers or their peers.

Involving Parents and Carers

The school believes that it is important to have the support of parents, carers and the wider community for the Jigsaw PSHE programme.

Parents and carers are/will be given the opportunity to find out about and discuss the Jigsaw PSHE programme through:

- Parent/carer Jigsaw awareness session
- Parents'/carers' evenings
- Information leaflets/displays

Assessment

Children's understanding, knowledge and skills are assessed through observation, discussion, questioning and group participation. Children will be encouraged to talk about and reflect on their own experiences. Every child, in KS1 and KS2 has a Jigsaw Journal that will follow them through their time at school. As well as being a record of their learning it will also be used as an assessment tool.

For the early years, evidence of learning will be in the children's Learning Journals. General comments about PSHE will be included in annual reports to parents. Individual pupil profiles will also reflect areas of health and well-being.

Appendix 1: By the end of primary school pupils should know

Topic	Pupils should know
<p>➤ Families and people who care about me</p>	<ul style="list-style-type: none"> ➤ That families are important for children growing up because they can give love, security and stability ➤ The characteristics of healthy family life, commitment to each other, including in times of difficulty, protection and care for children and other family members, the importance of spending time together and sharing each other's lives ➤ That others' families, either in school or in the wider world, sometimes look different from their family, but that they should respect those differences and know that other children's families are also characterised by love and care ➤ That stable, caring relationships, which may be of different types, are at the heart of happy families, and are important for children's security as they grow up ➤ That marriage represents a formal and legally recognised commitment of two people to each other which is intended to be lifelong ➤ How to recognise if family relationships are making them feel unhappy or unsafe, and how to seek help or advice from others if needed
<p>➤ Caring friendships</p>	<ul style="list-style-type: none"> ➤ How important friendships are in making us feel happy and secure, and how people choose and make friends ➤ The characteristics of friendships, including mutual respect, truthfulness, trustworthiness, loyalty, kindness, generosity, trust, sharing interests and experiences and support with problems and difficulties ➤ That healthy friendships are positive and welcoming towards others, and do not make others feel lonely or excluded ➤ That most friendships have ups and downs, and that these can often be worked through so that the friendship is repaired or even strengthened, and that resorting to violence is never right ➤ How to recognise who to trust and who not to trust, how to judge when a friendship is making them feel unhappy or uncomfortable, managing conflict, how to manage these situations and how to seek help or advice from others, if needed

Topic	Pupils should know
<p>➤ Respectful relationships</p>	<ul style="list-style-type: none"> ➤ The importance of respecting others, even when they are very different from them (for example, physically, in character, personality or backgrounds), or make different choices or have different preferences or beliefs ➤ Practical steps they can take in a range of different contexts to improve or support respectful relationships ➤ The conventions of courtesy and manners ➤ The importance of self-respect and how this links to their own happiness ➤ That in school and in wider society they can expect to be treated with respect by others, and that in turn they should show due respect to others, including those in positions of authority ➤ About different types of bullying (including cyberbullying), the impact of bullying, responsibilities of bystanders (primarily reporting bullying to an adult) and how to get help ➤ What a stereotype is, and how stereotypes can be unfair, negative or destructive ➤ The importance of permission-seeking and giving in relationships with friends, peers and adults
<p>➤ Online relationships</p>	<ul style="list-style-type: none"> ➤ That people sometimes behave differently online, including by pretending to be someone they are not ➤ That the same principles apply to online relationships as to face-to-face relationships, including the importance of respect for others online including when we are anonymous ➤ The rules and principles for keeping safe online, how to recognise risks, harmful content and contact, and how to report them ➤ How to critically consider their online friendships and sources of information including awareness of the risks associated with people they have never met ➤ How information and data is shared and used online

Topic	Pupils should know
<p>➤ Being safe</p>	<ul style="list-style-type: none"> ➤ What sorts of boundaries are appropriate in friendships with peers and others (including in a digital context) ➤ About the concept of privacy and the implications of it for both children and adults; including that it is not always right to keep secrets if they relate to being safe ➤ That each person's body belongs to them, and the differences between appropriate and inappropriate or unsafe physical, and other, contact ➤ How to respond safely and appropriately to adults they may encounter (in all contexts, including online) whom they do not know ➤ How to recognise and report feelings of being unsafe or feeling bad about any adult ➤ How to ask for advice or help for themselves or others, and to keep trying until they are heard ➤ How to report concerns or abuse, and the vocabulary and confidence needed to do so ➤ Where to get advice e.g. family, school and/or other sources