
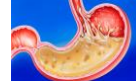


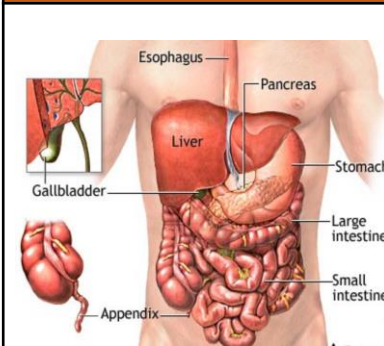


| Vocabulary | Meaning |
|-----------------------|---|
| organ | a part of a living thing which has a specific function |
| absorb | to take in or soak up liquid |
| digestive system | a group of organs that work together, allowing food to be ingested and nutrients to be absorbed into the body |
| oesophagus | the organ that connects your mouth to your stomach |
| gastric acid | the juice in the stomach that breaks down food into liquid |
| small intestine | joining the stomach, this is the tube where food passes and nutrients are absorbed into the blood |
| rectum | the final section of the large intestine where waste is removed |
| stomach | an organ containing gastric acid which helps start digestion |
| intestine | long tube running from the stomach to the anus |
| pancreas | organ that produces enzymes that help with digestion |
| anus | where the digestive system ends, waste leaves body |
| filter | to remove unwanted particles from a liquid |
| vitamins and minerals | nutrients needed in very small quantities (vitamins: mostly from food we eat, minerals: metal compounds) |
| milk teeth | our first set of teeth, from 12 months to 3 years old |
| adult teeth | our permanent teeth – from about 14 years old |
| wisdom teeth | the last four teeth to develop |
| calcium | a mineral needed for healthy teeth and bones |
| molar | a tooth used to crush and grind food |

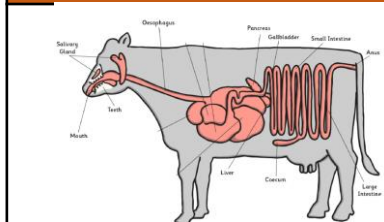
| Mouth and teeth | Stomach and fundus | Small intestine | Rectum |
|---|---|---|---|
|  |  |  |  |

Key knowledge – The Human Digestive System



What happens to the food we eat?
 Our stomach contains enzymes. These are important for breaking down the food so it can be absorbed by the body. After the stomach, the partially-digested food passes into the intestines where it begins to be absorbed.

Key knowledge – Why do different animals have different digestive systems?



The cow has four stomachs. it undergoes a special digestive process to break down the tough and coarse food it eats. When the cow first eats, it chews the food just enough to swallow it. The food then goes to the third and fourth stomachs, where it is fully digested.